

Low Capacitance ESD/Surge Protection for Gigabit Ethernet Interfaces

DESCRIPTION

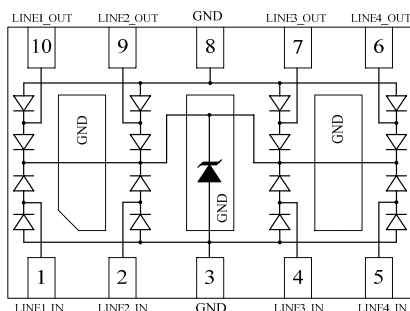
GESD2204-25 is a low-capacitance Transient Voltage Suppressor (TVS) array designed to provide electrostatic discharge (ESD) protection for high-speed data interfaces. With typical capacitance of 3.8pF only, GESD2204-25 is designed to protect parasitic-sensitive systems against over-voltage and over-current transient events. It complies with IEC 61000-4-2 (ESD) ($\pm 30\text{kV}$ air, $\pm 30\text{kV}$ contact discharge), IEC 61000-4-4 (electrical fast transient - EFT) (40A, 5/50 ns), IEC 61000-4-5 (Surge) (40A, 8/20 μs), very fast charged device model (CDM) ESD and cable discharge event (CDE), etc.

Each GESD2204-25 device can protect two high-speed line pairs. The “flow-thru” design minimizes trace inductance and reduces voltage overshoot associated with ESD events. The combined features of low capacitance and high ESD robustness make GESD2204-25 ideal for high-speed data port and high-frequency line (e.g., Gigabit Ethernet Ports) applications. The low clamping voltage of the GESD2204-25 guarantees a minimum stress on the protected IC.

ORDERING INFORMATION

- ◇ Device: GESD2204-25
- ◇ Package: DFN3.0*2.0-10L
- ◇ Marking: part number, date code
- ◇ Material: Halogen free
- ◇ Packing: Tape & Reel
- ◇ Quantity per reel: 3,000pcs

PIN CONFIGURATION



FEATURES

- ◇ Transient protection for high-speed data lines
 - IEC 61000-4-2 (ESD) $\pm 30\text{kV}$ (Air)
 - $\pm 30\text{kV}$ (Contact)
 - IEC 61000-4-4 (EFT) 40A (5/50 ns)
 - IEC 61000-4-5 (Surge) 40A (8/20 μs)
- ◇ Package optimized for high-speed lines
- ◇ Provides protection for two line pairs
- ◇ Low capacitance: 3.8pF @ 0V (Typical)
- ◇ Low leakage current: 0.1 μA @ VRWM (Typical)
- ◇ Low operating and clamping voltage
- ◇ Each I/O pin can withstand over 1000 ESD strikes for $\pm 8\text{kV}$ contact discharge

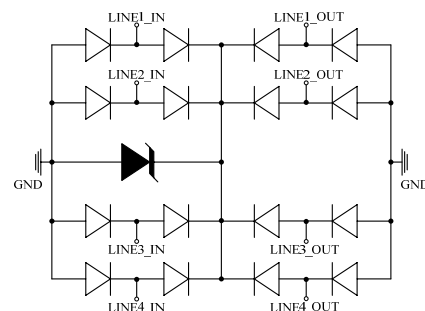
MACHANICAL DATA

- ◇ DFN3.0*2.0-10L package
- ◇ Flammability Rating: UL 94V-0
- ◇ MSL 1 & Thermally-Enhanced
- ◇ Flow-Through
- ◇ Packaging: Tape and Reel
- ◇ Reel size: 7 inch
- ◇ High temperature soldering guaranteed: 260 $^{\circ}\text{C}$ /10s

APPLICATIONS

- ◇ 10/100/1000M Ethernet Ports
- ◇ WAN/LAN Equipment
- ◇ Desktops, Servers and Notebooks
- ◇ Cellular Phones
- ◇ Switching Systems
- ◇ Audio/Video Inputs

CIRCUIT DIAGRAM



ABSOLUTE MAXIMUM RATING

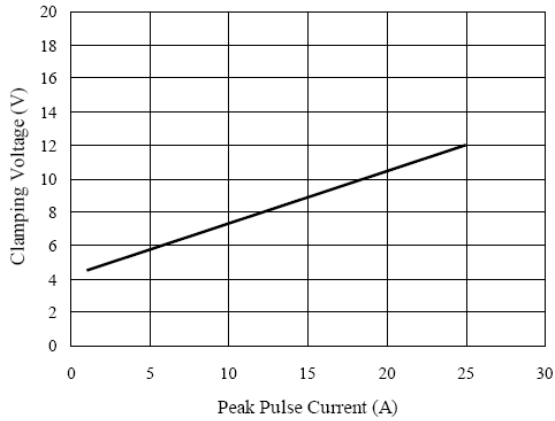
Symbol	Parameter	Value	Units
P _{PP}	Peak Pulse Power (8/20μs)	1000	W
I _{PP}	Peak Pulse Current (8/20μs)	40	A
V _{ESD}	ESD per IEC 61000-4-2 (Air) ESD per IEC 61000-4-2 (Contact)	±30 ±30	kV
T _{OPT}	Operating Temperature	-55/+125	°C
T _{STG}	Storage Temperature	-55/+150	°C

ELECTRICAL CHARACTERISTICS (T_{amb}=25°C)

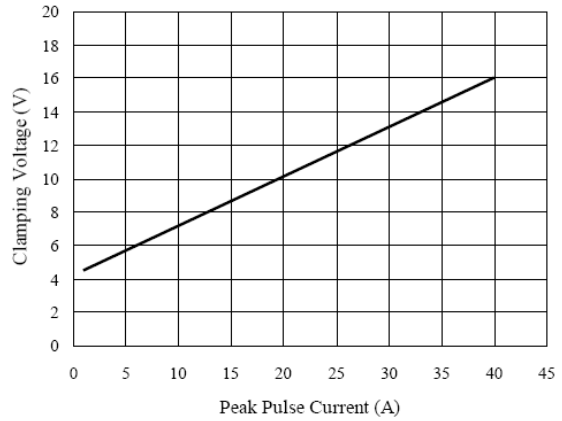
Symbol	Parameter	Test Condition	Min	Typ	Max	Units
V _{RWM}	Reverse Working Voltage				2.5	V
I _R	Reverse Leakage Current	V _{RWM} = 2.5V Any I/O pin to GND		0.1	1.0	μA
V _{t1}	Trigger Voltage	I _{t1} = 1μA Any I/O pin to GND	3.0	3.7	4.5	V
V _h	Holding Voltage	I _h = 1mA Any I/O pin to GND	3.0		4.0	V
V _{C1}	Clamping Voltage 1	I _{PP} = 1A, t _p = 8/20μs Any I/O pin to GND			4.5	V
V _{C2}	Clamping Voltage 2	I _{PP} = 10A, t _p = 8/20μs Any I/O pin to GND			8.7	V
V _{C3}	Clamping Voltage 3	I _{PP} = 25A, t _p = 8/20μs Any I/O pin to GND			12.0	V
V _{C4}	Clamping Voltage 4	I _{PP} = 40A, t _p = 8/20μs Line-to-Line/Line-to-GND, Two I/O pins connected to each line			20.0	V
C _{J1}	Junction Capacitance 1	V _R = 0V, f = 1MHz Any I/O pin to GND		3.8	5.0	pF
C _{J2}	Junction Capacitance 2	V _R = 0V, f = 1MHz Between I/O pins		1.7	2.5	pF

ELECTRICAL CHARACTERISTICS CURVE

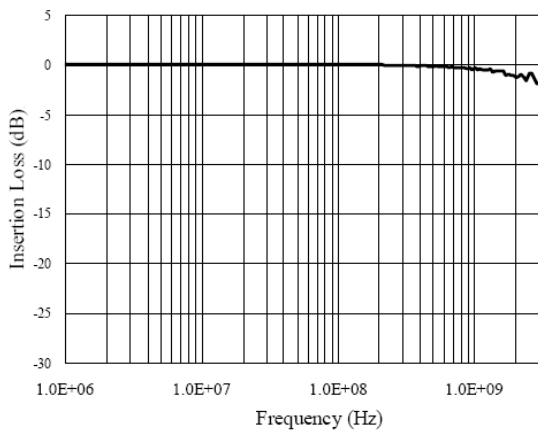
Clamping Voltage V_C vs. Current I_{PP}
Any I/O to GND



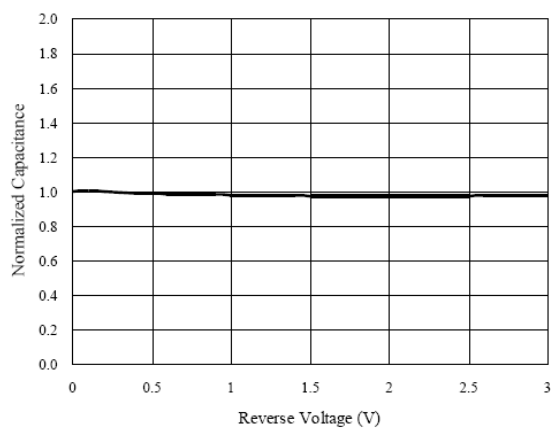
Clamping Voltage V_C vs. Current I_{PP}
Line-to-Line, Two I/O Pins Connected Together



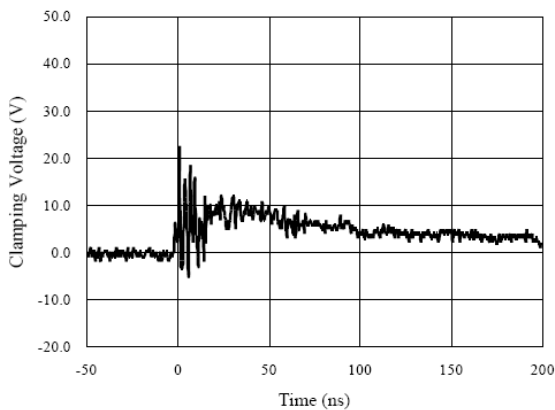
Insertion Loss S21



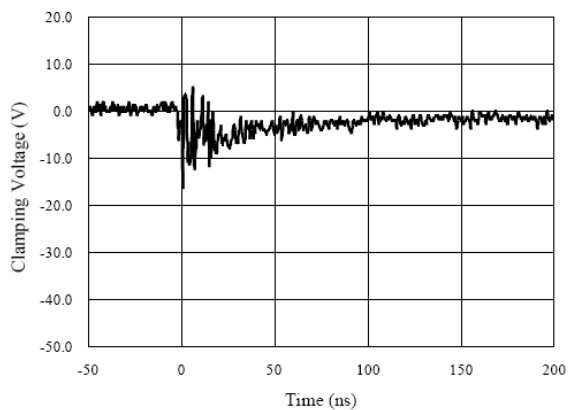
Normalized Capacitance vs. Voltage



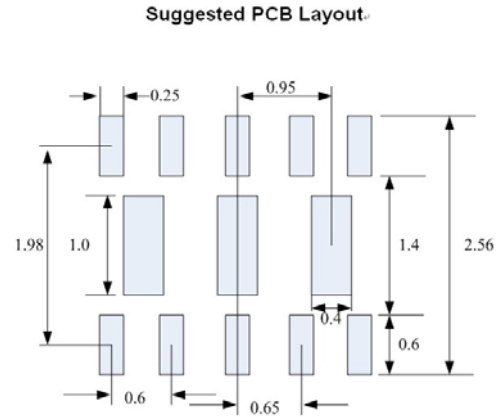
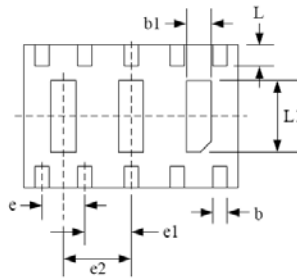
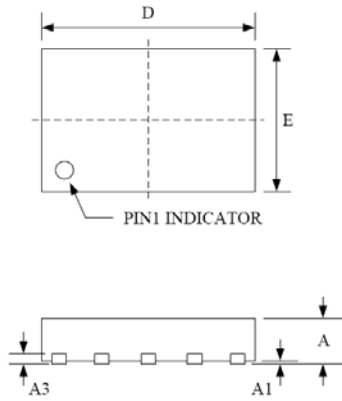
ESD Clamping of I/O to GND
(+8kV Contact per IEC 61000-4-2)



ESD Clamping of I/O to GND
(-8kV Contact per IEC 61000-4-2)



DFN3.0*2.0-10L PACKAGE OUTLINE DIMENSIONS



Package Dimensions (Controlling dimensions are in millimeters)

Symbol	Dimensions (mm)			Dimensions (Inches)		
	Minimum	Typical	Maximum	Minimum	Typical	Maximum
A	0.500	0.600	0.650	0.020	0.024	0.026
A1	0.000	0.030	0.050	0.000	0.001	0.002
A3	0.15 REF			0.006 REF		
b	0.150	0.200	0.250	0.006	0.008	0.010
b1	0.250	0.350	0.450	0.010	0.014	0.018
D	2.900	3.000	3.100	0.114	0.118	0.122
E	1.900	2.000	2.100	0.075	0.079	0.083
e	0.600 BSC			0.024 BSC		
e1	0.650 BSC			0.026 BSC		
e2	0.950 BSC			0.037		
L	0.250	0.300	0.350	0.010	0.012	0.014
L1	0.950	1.000	1.050	0.037	0.039	0.041